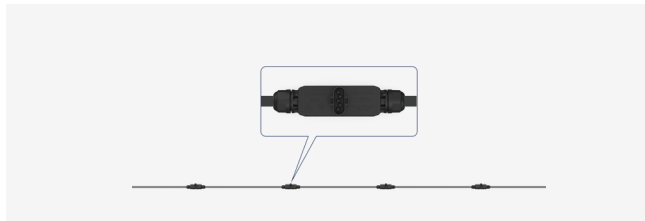


Cable Accessories for Microinverter of HMT Series



3P-AC Trunk Cable, 12/10 AWG Cable

3P-AC Trunk Cable is used to connect the microinverter to distribution box. The Trunk Connector on the 3P-AC Trunk Cable is evenly distributed at intervals, Hoymiles provides 3P-AC Trunk Cable with different AC Trunk Connector spacing.



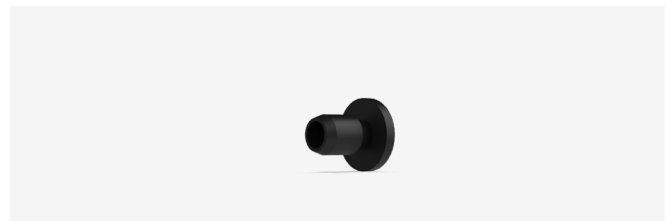
3P-AC Trunk Connector

The AC Sub Connector of the microinverter can be inserted into the port of the 3P-AC Trunk Connector. Plug and play connectors speed up and simplify installation.



3P-AC Trunk Port Cap

Used to protect vacant AC Trunk Port.



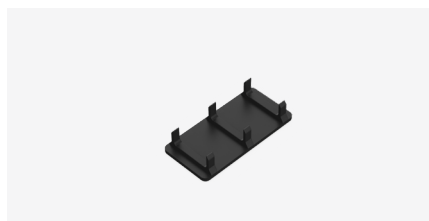
3P-AC Trunk End Cap

Used to protect the cable port of 3P-AC Trunk Connector at the end of the 3P-AC branch.



3P-AC Trunk Port Disconnect Tool

Used to disconnect the connection between the microinverter and the 3P-AC Trunk Connector.



3P-AC Trunk Connector Unlock Tool

Used to unlock the 3P-AC Trunk Connector upper cover so that the cable can be removed, replaced, and the 3P-AC Trunk End Cap installed.



DC Extension Cable

Connect the microinverter and the PV module when the distance between the two exceeds the original cable length.

Technical Specifications

Model		3P-AC Trunk Cable
Main Parameters		
Cable type		10 AWG
Rated voltage		600 V
Cable outer diameter		15.8±0.50 mm
Ambient temperature range		-40°C to +90°C
AC Trunk Connector spacing		3.05 m
Number of AC Trunk Connectors per single AC Trunk Cable		14
Single AC Trunk Cable length		45.5 m
Compliance		
Product standard		UL 44, UL 1277, UL 1581
RoHS compliant		Yes

Model		3P-AC Trunk Connector
Main Parameters		
Pin number		3P+N+PE
Rated current		32 A (Use 10 AWG/6mm ² copper cable)
Rated voltage		500 V
Contact resistance		≤5 mΩ
Power frequency withstand voltage		3000 V AC
Over voltage type		III
Connection Parameter		
Applicable cable specification		12/10 AWG
Applicable cable outer diameter		13 mm to 18 mm
Cable connection type		Screw pressing
Sub connector connection type		Crimping
Mechanical Data		
Ambient temperature range		-40°C to +85°C
Dimensions (L × W × H mm)		200 × 45 × 120
Protection rating		IP68
Flame resistance degree		UL 94-V0
Compliance		
Product standard		2PFG1915 ANSI/UL 6703-2017
RoHS compliant		Yes

Model		DC Extension Cable	
Cable			
Cable type		PV1-F 1X4	
Rated current		20 A	
Rated voltage		Max.1800V DC	
Cable length		1 m	
Ambient temperature range		-40°C to +90°C	
Product standard		2 PFG 1169/08.2007	
DC Connector			
Manufacturer	Betteri	Staubli	
Type	BC03A, BC03B	PV-KBT4/6II-UR	
Rated current	30 A	39 A (TUV), 30 A (UL)	
Rated voltage	1000 V DC (TUV), 600/1000 V DC (CSA)	1000 V DC (TUV), 1500 V DC (UL)	
Rated impulse withstand voltage	6000 V	12000 V	
Over voltage category		III	
Ambient temperature range	-40°C to +85°C	-40°C to +85°C (TUV), -40°C to +75°C (UL)	
Protection rating	IP67	IP68	
Flame resistance degree		UL 94-V0	
Product standard	EN 62852:2014 UL 6703	EN 62852 UL 6703 2PFG2330 CNCA/CTS0002-2012	
RoHS compliant		Yes	

Ordering Information

AC (Three phase Trunk) Accessories

Type	Model	Description
3P-AC Trunk Cable	3P-AC Trunk Cable_14T_14L_12AWG-3.05m	14 Three Phase AC Trunks and 14 AC Cable (Per Cables Length 3.05m, 12AWG)
	3P-AC Trunk Cable_14T_14L_10AWG-3.05m	14 Three Phase AC Trunks and 14 AC Cable (Per Cables Length 3.05m, 10AWG)
3P-AC Trunk Port Disconnect Tool	3P-AC Trunk Port Disconnect Tool	1 Three Phase AC Trunk Port Disconnect Tool
3P-AC Trunk Port Cap	3P-AC Trunk Port Cap	1 Three Phase AC Trunk Port Cap
3P-AC Trunk Connector Unlock Tool	3P-AC Trunk Connector Unlock Tool	1 Three Phase AC Trunk Connector Unlock Tool
3P-AC Trunk End Cap	3P-AC Trunk End Cap	1 Three Phase AC Trunk End Cap

DC Accessories

Type	Model	Description
DC Connector-F	BC03A-F-C24	1 DC Female Connector (Betteri)
DC Connector-M	BC03A-M-C24	1 DC Male Connector (Betteri)
DC Connector Unlock Tool	MC4_Con_Unlock	1 DC Connector Disconnect Tool
DC Extension Cable	DC_Ext_Cable-1m	1 DC Male Connector (Betteri), 1 DC Cable (Cable Length 1m, 12AWG) and 1 DC Female Connector (Betteri)
	Stau_DC_Ext_Cable-1m	1 DC Male Connector (Staubli), 1 DC Cable (Cable Length 1m, 12AWG) and 1 DC Female Connector (Staubli)